



Queen Cutlery Identification Guide

Tang Stamp & Blade Etch Dating

Schatt & Morgan, Queen City and Queen

Carl Bradshaw is to be thanked for designing and assembling this guide from many, many photos submitted to him.

This tang stamp guide was assembled by a group of Queen knife owners & collectors following the closing of the Queen factory in Titusville in 2018, based on photographing actual knife tang stamps in their various collections. This strategy has resulted in a much more detailed guide, with nearly all known stamps documented. Review of the knives and catalogs has also resulted in tighter dates for use of each stamp.

Some of the dates for when a stamp was used are approximate. Especially through the 1950's when "stainless" stamps were used, and through the modern era, into the 1980s.

Rarely, a knife might escape the factory without a tang stamp, but that does not automatically mean it was made in the 1960s, (when Queen did not use tang stamps, only blade etches.)

Some knives re-use tang stamps from earlier eras, such as all Schatt & Morgan or Queen City knives after 1991. Queen has tried to provide these knives with modifications, so one can tell them from an original readily (check the pile side.) The Queen Heritage collection used historical tang stamps, but also added an additional stamp on the pile side of the main blade. Queen Collector Club limited edition knives used many historical tang stamps, but also etched the blade prominently with date and club information.

***When buying a Queen knife with an older tang stamp,
pay attention to the whole knife!***

Note - newer Queen stamps and etches created after the 2018 closing of the Titusville, PA factory are not included in this identification guide.

Additional thanks to David Clark, Fred Fisher, Daniel Lago, David Krauss, Bob Welch, and Brian Guth for their contributions to the stamps and knife photos provided.

If any additional stamps are found, they will be added, and this guide will be updated, with the date listed below updated as well.



Queen Cutlery Identification Guide

Tang Stamp & Blade Etch Dating



Schatt & Morgan mark side stamp used from approximately 1897 to 1902.



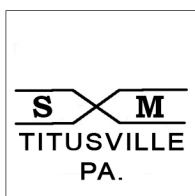
Schatt & Morgan mark side stamp used from approximately 1897 to 1902.

Later reused on modern knives from 2011-2012, usually with a pile side stamp to help distinguish from older knives.



Schatt & Morgan mark side stamp used from approximately 1897 to 1902.

Later reused on modern knives after 2000, usually with a pile side stamp to help distinguish from older knives.



Schatt & Morgan mark side stamp used from approximately 1903 to 1931.

Later reused on modern knives from 1991-2017, usually with a pile side stamp to help distinguish from older knives.



Schatt & Morgan mark side stamp used from approximately 1903 to 1931.



Schatt & Morgan mark side stamp used from approximately 1903 to 1931.



A Schatt & Morgan mid-blade stamp used by Sears Roebuck & Company. Used from 1905-1918.



Queen Cutlery Identification Guide

Tang Stamp & Blade Etch Dating



Schatt & Morgan pile side stamp used from approximately 1915 to 1918 on military WW1 officer's knives.

JESS CROUCH



A Schatt & Morgan mid-blade stamp used by W. Stokes Kirk Company, Philadelphia, PA. (Selling clothes, goods, and military surplus.) Used in their 1919-1920 catalogs.

QueenCity
Titusville, Pa.



Queen City mark side stamp used from approximately 1922 to 1933.

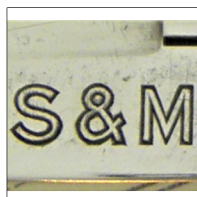
Later reused on modern knives in 2010, often accompanied with a pile side stamp to help distinguish from older knives.

QUEEN
CITY



Queen City mark side stamp used from approximately 1922 to 1942. Different sizes used. Also used on some knives from 1984 to 2017.

S & M



Rare Schatt & Morgan mid-blade stamp, used approximately during the 1920's.

"QUEEN"
STAINLESS



Queen Cutlery mark side stamp used during the early 1920's.

There are possible similar stamps with no quotes around Queen.

STAINLESS



Queen Cutlery stamp used in early 1920's.

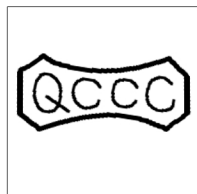


Queen Cutlery Identification Guide

Tang Stamp & Blade Etch Dating



Queen City mark side stamp used from approximately 1925 to 1932. 2 different styles of stamp shown here.



Queen City mark side stamp used from approximately 1930 to 1932. This mark was reused from 2012-2017 on some knife shields.



Queen City mark side stamp used from approximately 1937 to 1945.

Later reused on modern knives from 1984-2017, often accompanied with a pile side stamp to help distinguish from older knives.



Queen City mark side stamp used from approximately 1937 to 1945.



Queen City mark side stamp used in 1943 on a military WW2 machette.



Queen Cutlery mark side stamp used from approximately 1945 to 1948.



Queen Cutlery mark side sandblasted blade etch used approximately from 1946 to 1948.



Queen Cutlery Identification Guide

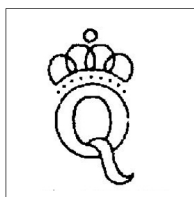
Tang Stamp & Blade Etch Dating



Queen Cutlery mark side sandblasted blade etch used approximately from 1946 to 1948.



Queen Cutlery mark side sandblasted blade etch used approximately from 1946 to 1948.



Queen Cutlery mark side stamp used from approximately 1945 to 1955.

This stamp is often referred to as "The Big Q"



Queen Cutlery stamp used only in Rough Hammered Kitchen Knives from 1945 to 1949.

Note: "Made in U.S.A." was added in 1971 and used from that year onward through the 70's. After that, Kitchen Knives were removed from the catalog.

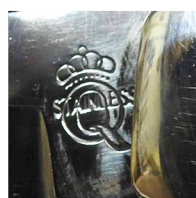


Queen Cutlery stamp used from 1951 to 1954. Can be used on either mark or pile sides.



Queen Cutlery mark side stamp used from 1951 to 1954.

*One of the rarest Queen stamps, only used on two versions of one pattern.



Queen Cutlery mark side stamp used approximately from 1951 to 1954.

*Most difficult to find of all stainless era stamps.



Queen Cutlery Identification Guide

Tang Stamp & Blade Etch Dating

QUEENCUTLERYCO.
TITUSVILLE,PA.



Queen Cutlery double line mark side stamp used approximately from 1951 to 1954.



Queen Cutlery mark side stamp used approximately from 1951 to 1954.



Queen Cutlery mark side stamp used from 1951 to 1954.



Queen Cutlery mark side stamp used approximately from 1951 to 1954.

STAINLESS



Queen Cutlery mark side stamp used from approximately 1951 to 1954.



Example of "Queen Stainless Steel" sticker label on blade of #39 pattern to help promote the steel name change. The earliest pocket knife offered with stainless steel blades. Knife intended for use on a display board. Approximately 1951 to 1955.



Queen Cutlery mark side stamp used approximately from 1951 to 1954.



Queen Cutlery Identification Guide

Tang Stamp & Blade Etch Dating



Queen Cutlery mark side stamp used throughout the 1950's.



Queen Cutlery mark side stamp used from approximately 1955 to 1957.



Example of "Queen Steel" sticker label on blade of stockman pattern to help promote the steel name change. Knife intended for use on a display board. Example shown is from 1955 to 1956.



Queen Cutlery mark side stamp used from approximately 1958 to 1960.

*Queen probably shortened the name from "Queen Steel" to "Q Steel" to avoid legal issues.



Example of "Queen Steel" sticker label on blade of stockman pattern with horsepick blade, to help promote the change in steel. Knife intended for use on very limited display boards. Example shown is from the 1950's.



Photo of knife with this stamp not yet available

Queen Cutlery mark side stamp used from approximately 1958 to 1960.

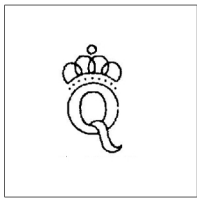
**NO
STAMP
USED**

***Note - Queen did not use any tang stamps from 1961 to 1971. Instead, blades were etched with Queen Cutlery name/logo.



Queen Cutlery Identification Guide

Tang Stamp & Blade Etch Dating



Queen Cutlery mark side stamp used in 1971. Same design as "Big Q" but smaller size. Servotronics used this stamp on some smaller sized pocket knives. There may be other stamps tried in the 1971 transition period.

This stamp is often referred to as "The Small Q"



Queen Cutlery most common blade etch used from the late 1950's through 2012. This etch was used on many knives, often with the model numbers etched also.



Blade etch including the "MADE IN U.S.A." underneath the Queen Steel # Model. Introduced in 1971 after the Servotronics purchase. Used intermittently until 1984 when it was placed on the tang stamp.



OK stamp for "Ontario Knife Company", sister company of Queen under Servotronics ownership. Used intermittently from 1971 to 2012. Blades may have Ontario tang stamp, with Queen blade etch.



Queen Cutlery mark side stamp used in 1972 only.



Queen Cutlery mark side stamp used on the Gamekeeper series, showing the pattern number in the stamp. Used from approximately 1972 to 1981.



Queen Cutlery mark side stamp used from approximately 1973 to 1975.



Queen Cutlery Identification Guide

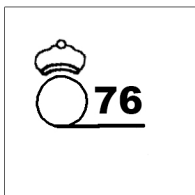
Tang Stamp & Blade Etch Dating



Queen Cutlery mark side stamp used approximately from 1975 to 1976.



Queen Cutlery mark side stamp used during 1976 only.



Queen Cutlery mark side stamp used during 1976 only.

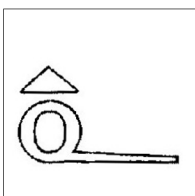
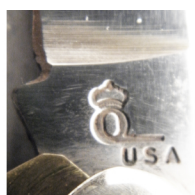


Photo of knife with this stamp not yet available

Queen Cutlery mark side stamp used during 1976, issued for Government or Military contract knives only.



Queen Cutlery mark side stamp used during the 1980's and early 1990's, with year included in stamp.



Queen Cutlery mark side stamp used from 1977 to 1983. Usually the year is included in stamp.



Queen Cutlery mark side stamp used, beginning in 1981. After 1990, the year is often also added to stamp.



Queen Cutlery Identification Guide

Tang Stamp & Blade Etch Dating

QUEEN
CUT.CO.



Queen Cutlery mark side stamp used on the double edge hunter boot knife, approximately from 1982 to 1990.

Q 1986



Queen Cutlery mark side stamp used on a military contract multi-use knife that was made between 1983 and 1986. All knives were stamped with the 1986 stamp.



Queen Cutlery or Schatt & Morgan pile side stamp beginning in 1984, and includes date after 1990.

QUEEN CUT. CO.
TITUSVILLE, PA
XXXX



Queen Cutlery stamp on mark or pile side used from 1990 to 2017, and sometimes accompanied with year stamped in.

MADE IN U.S.A.
2000



Schatt & Morgan pile side stamp used from approximately 1991 to 2010 on the Annual Series knives.

SCHATT &
MORGAN

SCHATT & MORGAN



Schatt & Morgan either mark or pile side stamp used from approximately 1991 to 2017. Can be either 2 lines, or all in 1 line.

QCCC

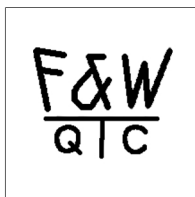


Queen Cutlery mark side stamp used in late 1990's and early 2000's.



Queen Cutlery Identification Guide

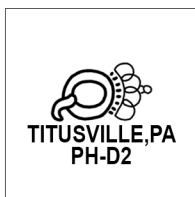
Tang Stamp & Blade Etch Dating



Schatt & Morgan pile side stamp, used on File & Wire knives approximately from 1998 to 2017.



Schatt & Morgan blade etch, used approximately from 2000 to 2017.



Queen Cutlery mark side stamp used from approximately 2002 to 2017. The "PH" refers to Peters Heat Treating, the company that treated the blades.



Queen Cutlery pile side stamp, used on Dan Burke knives from approximately 2004 to 2010.



Queen Cutlery pile side stamp, used from approximately 2011 to 2012 on Heritage Series knives.



Queen Cutlery pile side stamp, used from approximately 2013 to 2017. "DFC" stands for Daniels Family Cutlery, owners of Queen during this time.



Queen Cutlery pile side stamp, used from approximately 2013 to 2017. "DFC" stands for Daniels Family Cutlery, owners of Queen during this time.



Queen Cutlery Identification Guide

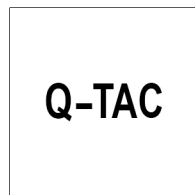
Tang Stamp & Blade Etch Dating



Queen Cutlery mark side stamp, used from approximately 2013 to 2017. "DFC" stands for Daniels Family Cutlery, owners of Queen during this time.



Queen Cutlery pile side stamp, used from approximately 2013 to 2017. "DFC" stands for Daniels Family Cutlery, owners of Queen during this time.



Queen Cutlery stamp used on tactical style knives from 2013 to 2017.



Queen Cutlery Custom Shop blade etch, used from 2014-2015.



"Every Day Carry" blade etch. Means 'Second Quality/Not Warranted', used from 2015-2017.



Schatt & Morgan mark side etched tang instead of stamped, used from 2016-2017.

***Note - additional stamps will be added as discovered. This current guide covers only Schatt & Morgan, Queen City, and Queen Cutlery. The various other brands/stamps produced by the S&M/Queen factory will be covered in separate guides.**